



the  
**Fan Studio**®

By Shishir Sah from the house of TULLU



# MANUFACTURER OF CUSTOM MADE DESIGNER HANDCRAFTED FANS SINCE 1999

The Fan Studio has its origins from 'TULLU', a leading brand which began its success with the manufacturing of water pumps. It was founded by Late Shri Vijay Kumar Sah in the year 1958. Earnest efforts and quality production led TULLU to grow in size and it was widely held to be a brand signifying excellence, reliability and efficiency. TULLU has registered several awards, honours and recognitions for its products and export.

Following the success of TULLU, Mr. Shishir Kumar Sah, expanded his vision and engaged in the setting up of a new company by the name of "Tullu Domestic Appliances" where qualified and innovative engineers looked into the performance, quality and stability of different products such as "Booty" mixer and grinder, exhaust fans, coolers, standard ceiling fans and table fans.

It was the accomplishment of these two companies that encouraged the dedicated founder and product designer Mr. Shishir Sah to dwell into his creativities and come up with the idea of manufacturing Handcrafted Designer fans. His pioneering efforts lead to the birth of India's first company to manufacture handcrafted designer ceiling fans. Conceiving fans as not just a utility appliance, he elevated fans to a level of status definers by letting customers explore their own ingenuity in choosing a designer fan. He brought exquisite traditional Indian art work such as Agra's intricate marble inlay, Jaipur's striking and fine metal carvings, glorious woodwork of Saharanpur, etc. in every single piece of the fans that he designed. What makes these fans user friendly is the advanced technology of functioning, making these designer fans not just look amazing but also work exceptionally well.

With time, designer fans assumed the category of luxurious lifestyle. Keeping in view such developments, this enterprise launched "The Fan Studio", a channel for design oriented fans under the major classes of Classic, Contemporary and Colonial designs.

What makes it distinct is that The Fan Studio is the sole brand of fans in India where fans are redone as per the customer needs. Be the customization in the understanding of the interiors of the room or an exceptional inclination of some masterful work, The Fan Studio ensures that the customer inclinations are soaked up on the fans creatively.

IMAGINE THE  
*POSSIBILITY*





*“Brilliant craft work with  
focus on minute details”*

## TABLE OF CONTENT

INTRODUCTION .....	01
VISUAL REFERENCE GUIDE .....	05
MODERN FANS .....	07-39
CLASSIC FANS .....	41-61
COLONIAL FANS .....	63-87





## VISUAL REFERENCE GUIDE



**AVIATOR 3 BLADE** | 50"  
PG 9



**AVIATOR PROPELLOR** | 50"  
PG 11



**MOONFACE WOODEN** | 48"  
PG 13



**MOONFACE METAL** | 48"  
PG 15



**LEGEND** | 48"  
PG 53



**ERA** | 48"  
PG 55



**CROWN VINTAGE** | 48"  
PG 57



**MONARCH HAND PAINTED** | 48"  
PG 59



**SAPPHIRE** | 48"  
PG 17



**ALTIS** | 48"  
PG 19



**LANTANA** | 48"  
PG 21



**EDEN LEATHER** | 48"  
PG 23



**PEDESTAL & ANTIQUE** | 16", 12"  
PG 61



**HAND PAINTED SHALIMAR** | 48"  
PG 65



**DIVA HERITAGE** | 50"  
PG 67



**ESTELLA** | 48"  
PG 25



**GLADIATOR** | 48"  
PG 27



**HELIOS** | 56", 60", 72"  
PG 29



**SHALIMAR ANTIQUE SILVER** | 48"  
PG 43



**SHALIMAR CANE** | 48"  
PG 69



**SHALIMAR LEAF** | 36"  
PG 71



**MARVEL** | 48"  
PG 73



**VIRAJ** | 48"  
PG 75



**SOVEREIGN** | 50"  
PG 45



**DYNASTY** | 48"  
PG 47



**MONARCH** | 48"  
PG 49



**DIVA** | 48"  
PG 51



**CRESCENT** | 48"  
PG 67



**REVIVAL** | 48"  
PG 69



**VICTOR** | 48"  
PG 71



**REVIVAL DLX** | 48"  
PG 73





**DESIRE** | 48"/52"  
PG 30a



**AMAZE** | 48"/52"  
PG 30b



**UFO** | 48"/52"  
PG 30c



**FLORENCE** | 48"/52"  
PG 30d



**TRIPOD**  
PG 30e



**CASCADE** | 48"  
PG 85



**BOMBAY** | 16"/400mm  
PG 87

### Blade Finishes (Hand Polished)



Natural Teak



Rosewood

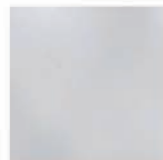


Walnut

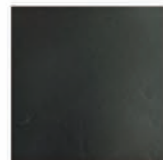


Dark Walnut

### Motor Finishes



Matt White



Matt Black



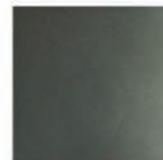
Matt Pewter



Antique  
Bronze



Aluminium  
Silver



Matt Charcoal  
Grey

MODERN *collection*





### AVIATOR 3 BLADE

**Available Finishes**

- Matt Black
- Matt White
- Antique Bronze
- Matt Pweter

**Specification**

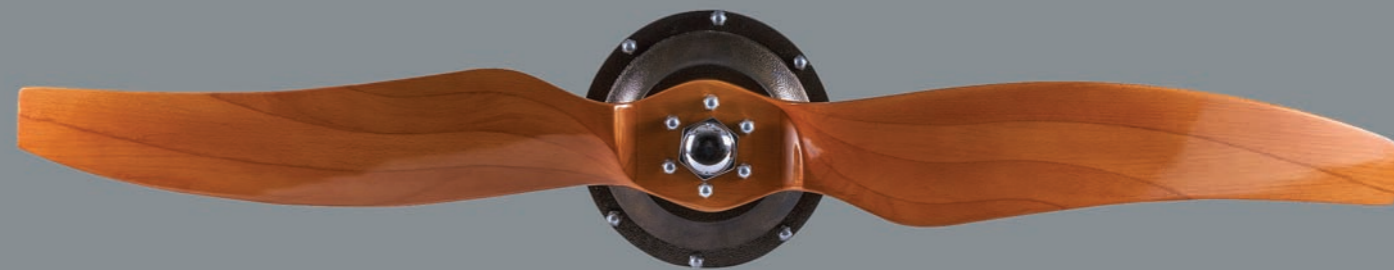
- Sweep : 50"inch
- Volt : 220
- Watt : 85
- Rpm : 270 Default with 50"inch sweep

**Available Wooden Blade Finishes**

- Wooden Natural Teak Hand Polish  
(Same as shown in picture)







## AVIATOR PROPELLOR

### Available Finishes

- Matt Black
- Matt White
- Antique Bronze
- Matt Pweter

### Specification

- Sweep : 50"inch
- Volt : 220
- Watt : 85
- Rpm : 270 Default with 50"inch sweep

### Available Wooden Blade Finishes

- Wooden Natural Teak Hand Polish  
(Same as shown in picture)







## MOONFACE WOODEN

### Available Finishes

- Matt Black
- Matt White
- Antique Bronze
- Matt Pweter

### Available Wooden Blade Finishes

- Wooden Natural Teak Hand Polish
- Wooden Walnut Hand Polish
- Wooden Rosewood Hand Polish

### Specification

- Sweep : 48"inch ( Can be custom made from 36" to 52")
- Volt : 220
- Watt : 85
- Rpm : 270 Default with 48"inch sweep (Note : Rpm changes according to sweep size)





## MOONFACE METAL

### Available Finishes

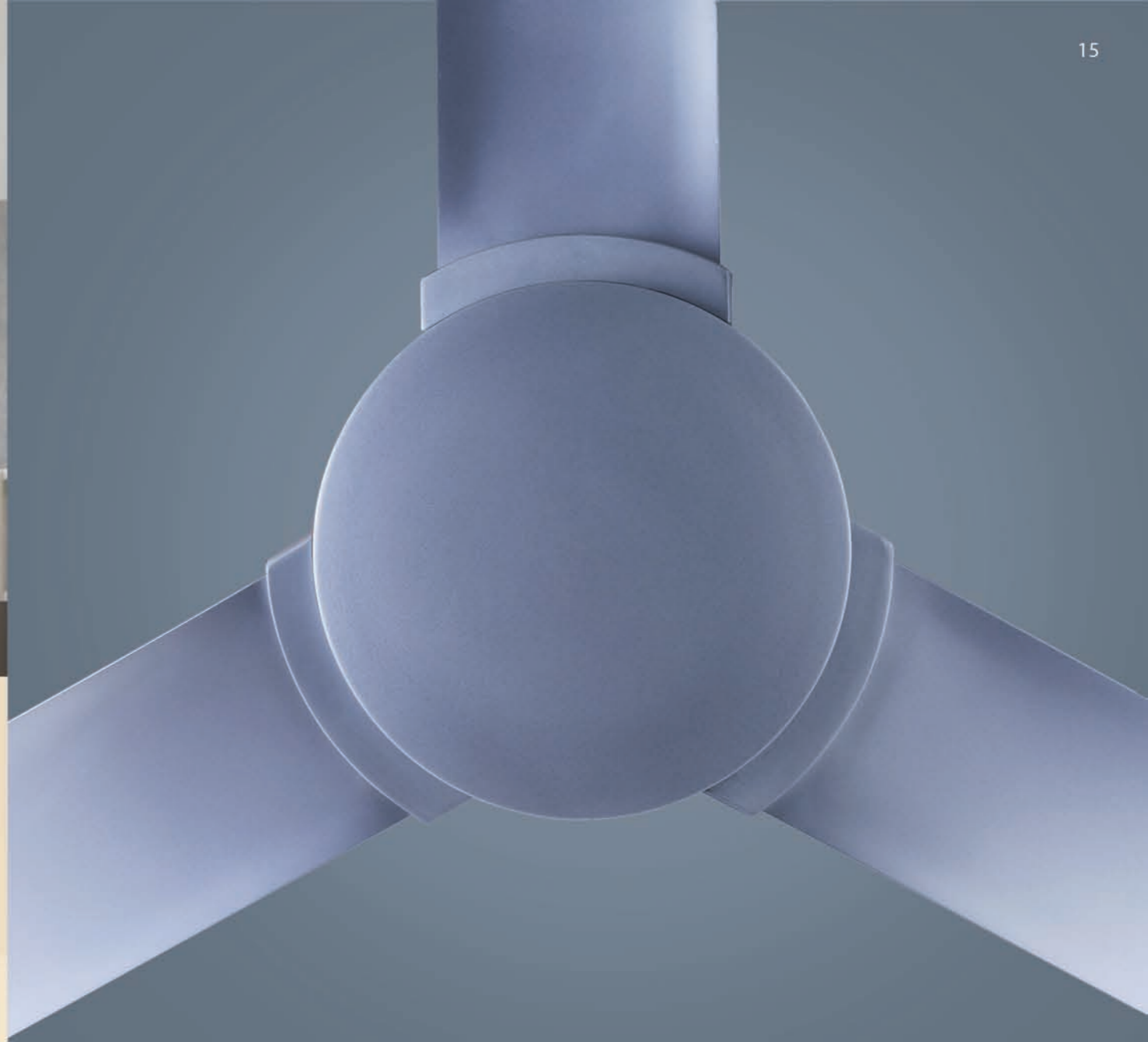
- Matt Black
- Matt White
- Antique Bronze
- Matt Pweter
- Silver

### Available Aluminium Blade Finishes

- Aluminium Antique Bronze
- Aluminium Silver
- Aluminium Matt White
- Aluminium Matt Black
- Aluminium Matt Pweter

### Specification

- Sweep : 48"inch ( Can be custom made from 36" to 52")
- Volt : 220
- Watt : 85
- Rpm : 270 Default with 48"inch sweep (Note : Rpm changes according to sweep size)







# SAPPHIRE

## Specification

- Sweep : 48"inch ( Can be custom made from 36" to 52")
- Volt : 220
- Watt : 85
- Rpm : 270 Default with 48"inch sweep (Note : Rpm changes according to sweep size)

## Available Finishes

- Matt Black
- Matt White
- Antique Bronze
- Matt Pweter
- Alluminium Brushed

## Available Wooden & Aluminium Blade Finishes:

- Wooden Natural Teak Hand Polish
- Wooden Walnut Hand Polish
- Wooden Rosewood Hand Polish
- Aluminium Antique Bronze
- Aluminium Brushed
- Aluminium Matt White
- Aluminium Matt Black
- Aluminium Matt Pweter







**ALTIS**

**Specification**

- Sweep : 48"inch ( Can be custom made from 36" to 52")
- Volt : 220
- Watt : 85
- Rpm : 270 Default with 48"inch sweep  
(Note : Rpm changes according to sweep size)

<b>Available Finishes</b>	<b>Available Wodden &amp; Aluminium Blade</b>
- Matt Black	- Wodden Natural Teak Hand Polish
- Matt White	- Wodden Walnut Hand Polish
- Antique Bronze	- Wodden Rosewood Hand Polish
- Aluminium Brushed	- Aluminium Antique Bronze
- Matt Pweter	- Aluminium Matt White
	- Aluminium Matt Black
	- Aluminium Brushed
	- Aluminium Matt Pewter







## LANTANA

### Specification

- Sweep : 48"inch ( Can be custom made from 36" to 50")
- Volt : 220
- Watt : 85
- Rpm : 270 Default with 48"inch sweep  
(Note : Rpm changes according to sweep size)

### Available Finishes

- Matt Black
- Matt White
- Antique Bronze
- Matt Pweter

### Available Aluminium Blade Finishes

- Aluminium Antique Bronze
- Aluminium Matt White
- Aluminium Matt Black
- Aluminium Matt Pweter





## EDEN LEATHER

### Available Finishes

- Matt Black
- Matt White
- Antique Bronze
- Antique Silver (Refer to model shalimar silver)

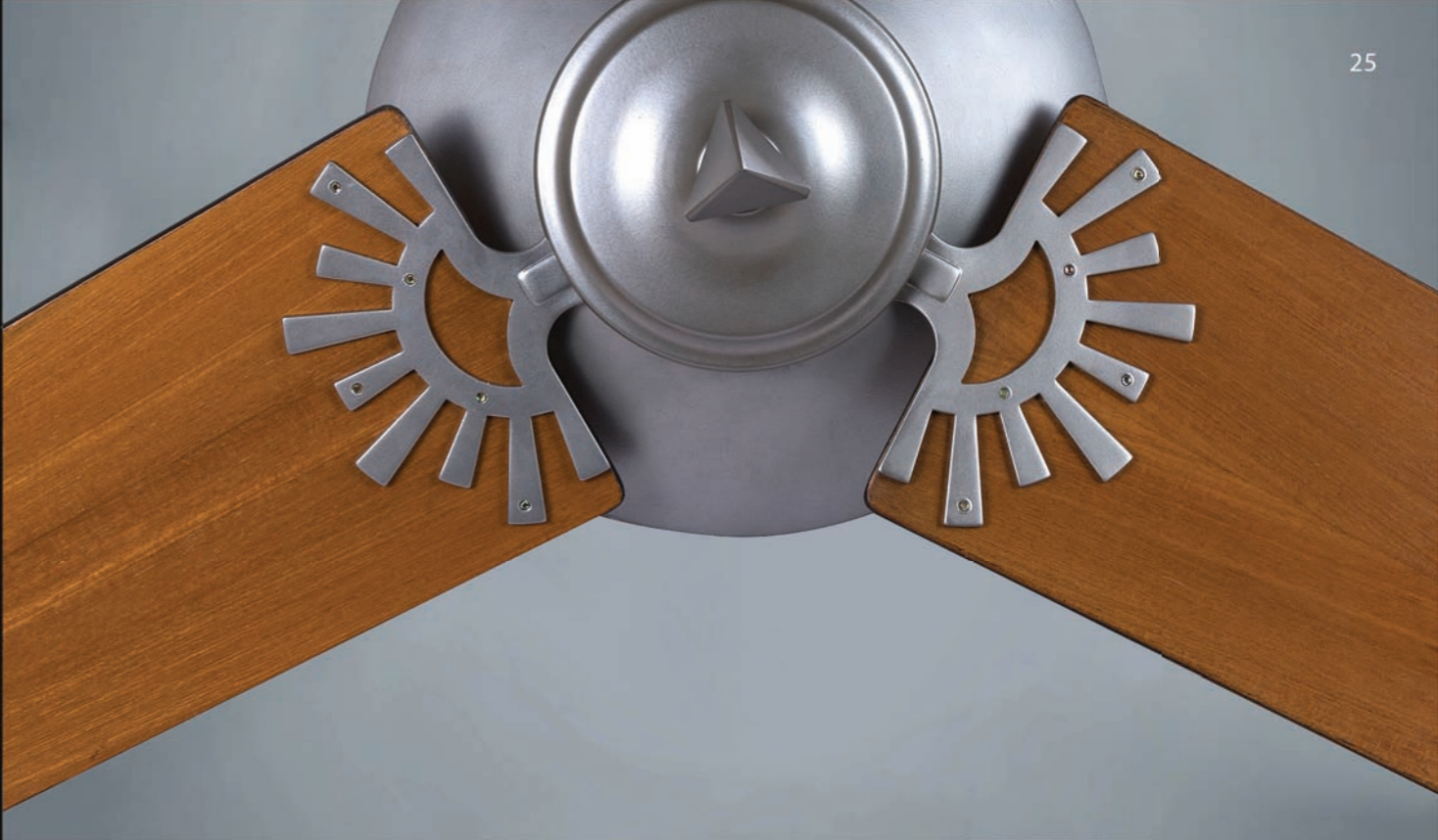
### Available Wooden Blade Finishes

- Wooden Natural Teak Hand Polish
- Wooden Walnut Hand Polish
- Wooden Rosewood Hand Polish

### Specification

- Sweep : 48"inch ( Can be custom made from 36" to 52")
- Volt : 220
- Watt : 85
- Rpm : 270 Default with 48"inch sweep  
(Note : Rpm changes according to sweep size)





## ESTLA

**Available Finishes**

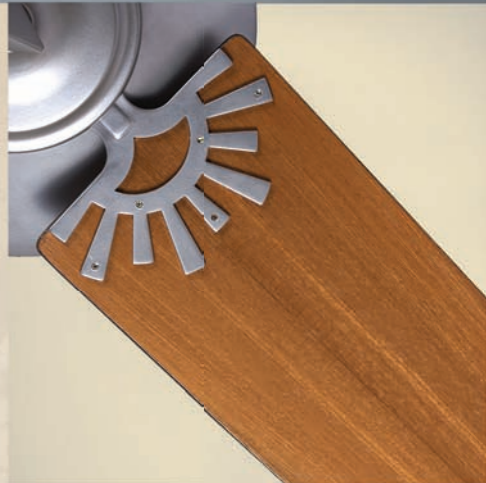
- Matt Black
- Matt White
- Antique Bronze
- Antique Silver (Refer to model shalimar silver)

**Available Wooden Blade Finishes**

- Wooden Natural Teak Hand Polish
- Wooden Walnut Hand Polish
- Wooden Rosewood Hand Polish

**Specification**

- Sweep : 48"inch ( Can be custom made from 36" to 52")
- Volt : 220
- Watt : 85
- Rpm : 270 Default with 48"inch sweep  
(Note : Rpm changes according to sweep size)







**GLADIATOR**

**Specification**

- Sweep : 48"inch ( Can be custom made from 36" to 52")
- Volt : 220
- Watt : 85
- Rpm : 270 Default with 48"inch sweep (Note : Rpm changes according to sweep size)

**Available Finishes**

- Matt Black
- Matt White
- Antique Bronze
- Matt Pweter

**Available Wooden Blade Finishes**

- Wooden Natural Teak Hand Polish
- Wooden Walnut Hand Polish
- Wooden Rosewood Hand Polish







## HELIOS

### Specification

- Sweep : 56" , 60" (Can be made in 3,4,5&6 blades)
- Sweep : 72" (Can be made in 2&3 blades)
- Volt : 220
- Watt : 79 TO 82 (watt changes according to sweep size & no of blades)

### Available Finishes

- Matt black
- Matt white
- Matt pewter
- Antique bronze
- Silver

### Available Wooden Blade Finishes

- Wooden natural teak hand polish
- Wooden walnut hand polish
- Wooden rosewood hand polish
- Matt black
- Matt white
- Matt pewter
- Antique bronze
- Silver



## DESIRE

### Available Finishes

- Matt Black
- Matt White
- Matt Charcoal Grey
- Antique Bronze
- Matt Pewter

### Specification

- Sweep : 48"inch (Can be custom made from 48" to 52")
- Volt : 230
- Watt : 75
- Rpm : 275 Default with 48"inch sweep  
(Note : Rpm changes according to sweep size)







## AMAZE

### Available Finishes

- Matt Black
- Matt White
- Matt Charcoal Grey
- Antique Bronze
- Matt Pweter
- Silver

### Available Aluminium Blade Finishes

- Aluminium Matt Black
- Aluminium Matt White
- Aluminium Matt Charcoal Grey
- Aluminium Matt Pweter
- Aluminium Antique Bronze
- Aluminium Silver

### Specification

- Sweep : 48"inch ( Can be custom made from 48" to 52")
- Volt : 230
- Watt : 75
- Rpm : 270 Default with 48"inch sweep  
(Note : Rpm changes according to sweep size)







## UFO

### Available Finishes

- Matt Black
- Matt White
- Matt Charcoal Grey
- Antique Bronze
- Matt Pweter
- Silver

### Specification

- Sweep : 48"inch ( Can be custom made from 48" to 52")
- Volt : 230
- Watt : 80
- Rpm : 265 Default with 48"inch sweep

### Available Aluminium Blade Finishes

- Aluminium Matt Black
- Aluminium Matt White
- Aluminium Matt Charcoal Grey
- Aluminium Antique Bronze
- Aluminium Matt Pweter
- Aluminium Silver







## FLORENCE

### Available Finishes

- Matt Black
- Matt White
- Matt Charcoal Grey
- Antique Bronze
- Matt Pweter

### Specification

- Sweep : 48"inch ( Can be custom made from 48" to 52")
- Volt : 230
- Watt : 70
- Rpm : 270 Default with 48"inch sweep  
(Note : Rpm changes according to sweep size)

### Available Wooden Blade Finishes

- Wooden Natural Teak Hand Polish
- Wooden Walnut Hand Polish
- Wooden Rosewood Hand Polish





## BOSSINI

### Specification

- Sweep : 48"inch (Can be custom made from 48" to 52")
- Volt : 230
- Watt : 75 (LIGHT WATT :7WATT)
- Rpm : 275 Default with 48"inch sweep  
(Note : Rpm changes according to sweep size)

### Available Finishes

- Matt Black
- Matt White
- Matt Charcoal Grey
- Matt Pweter
- Matt Brown
- Antique Bronze





## HURRICANE

### Specification

- Sweep : 48"inch ( Can be custom made from 48" to 52")
- Volt : 230
- Watt : 70
- Rpm : 270 Default with 48"inch sweep  
(Note : Rpm changes according to sweep size)

### Available Finishes

- Matt Black
- Matt White
- Matt Charcoal Grey
- Matt Pewter
- Matt Brown
- Antique Bronze



## MATRIX

### Specification

- Sweep : 48"inch (Can be custom made from 48" to 52")
- Volt : 230
- Watt : 75
- Rpm : 275 Default with 48"inch sweep  
(Note : Rpm changes according to sweep size)

### Available Finishes

- Matt Black
- Matt White
- Matt Charcoal Grey
- Matt Pweter
- Matt Brown
- Antique Bronze





## MAVERICK

### Specification

- Sweep : 48"inch (Can be custom made from 48" to 52")
- Volt : 230
- Watt : 75
- Rpm : 275 Default with 48"inch sweep  
(Note : Rpm changes according to sweep size)
- Rpm : 190 TO 240 (RPM changes according to sweep size & no of blades)

### Available Finishes

- Matt Black
- Matt White
- Matt Charcoal Grey
- Matt Pewter
- Matt Brown
- Antique Bronze



## AIRFOIL

### Specification

- Fan Diameter: 8feet
- Motor Power: 0.25kW
- Noise: 45dBa
- Diameter Coverage: 25 feet
- Mounting Height: 12 to 15 feet
- RPM: 100
- CFM: 21900
- Area Coverage: 500 Sqft
- Weight: 15Kgs
- Works on Remote

### Available Finishes

- Matt Black with Wooden Finish Blade





## MUSTANG

### Specification

- Sweep : 48"inch (Can be custom made from 48" to 60")
- Volt : 230
- Watt : 75
- Rpm : 280

### Available Finishes

- Matt Black
- Matt White
- Matt Charcoal Grey
- Matt Pweter
- Matt Brown
- Antique Bronze



## TRIPOD *fan*

### Available Finish:

- Antique bronze with natural teak wooden base

### Specification

- Sweep : 12"inch | 16"inch
- Volt : 230
- Watt : 45
- Rpm : 1400
- Height : 4'-5"







PURE SILVER  
*fan*

CLASSIC *collection*





## SHALIMAR ANTIQUE SILVER FAN

### Available Finishes

- Matt Black
- Matt White
- Antique Bronze
- Antique Silver

### Available Wooden Blade Finishes

- Wooden Natural Teak Hand Polish
- Wooden Walnut Hand Polish
- Wooden Rosewood Hand Polish

### Specification

- Sweep : 48"inch ( Can be custom made from 36" to 52")
- Volt : 220
- Watt : 85
- Rpm : 270 Default with 48"inch sweep (Note : Rpm changes according to sweep size)







## SOVEREIGN

### Specification

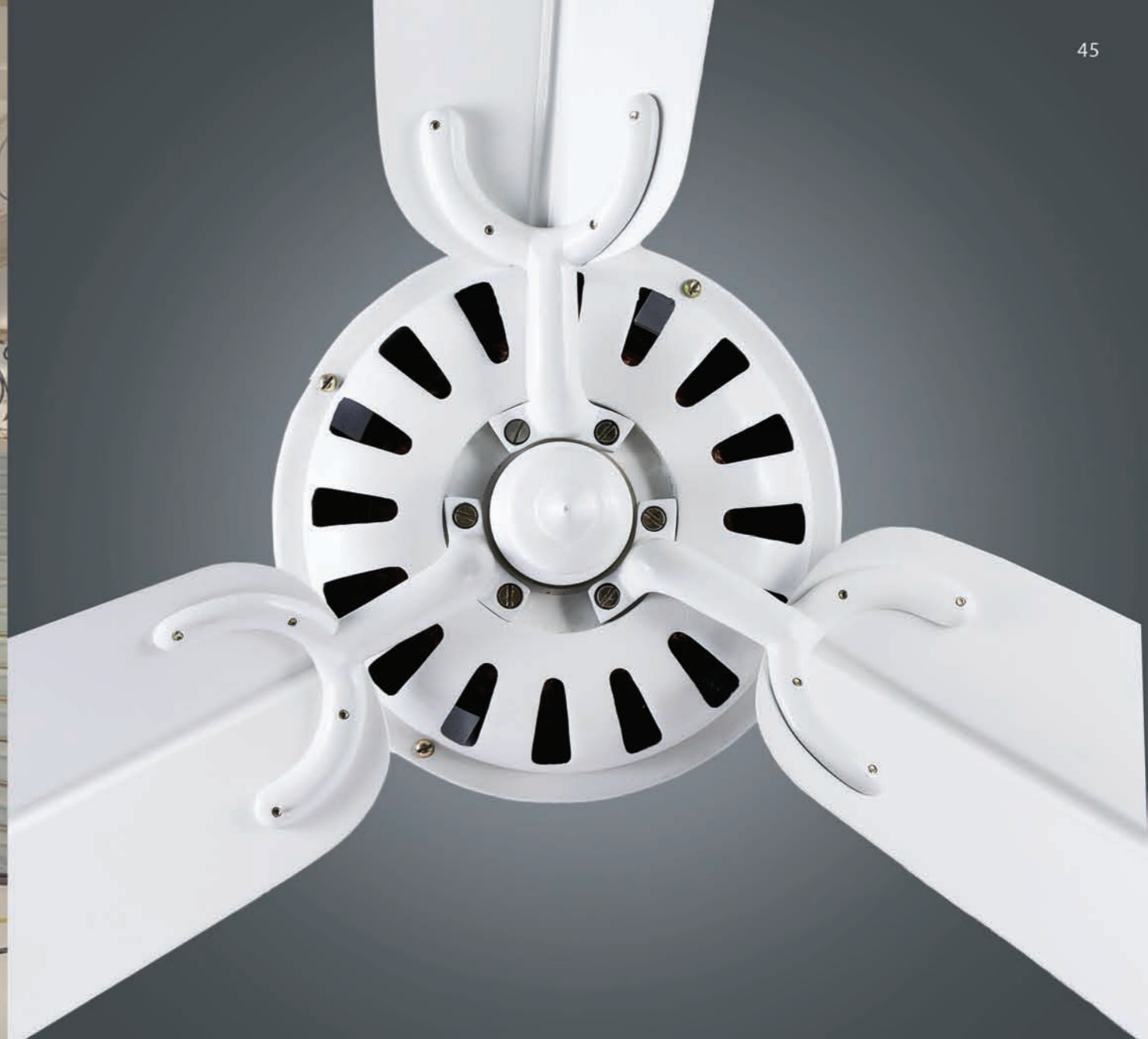
- Sweep : 50"inch
- Volt : 220
- Watt : 85
- Rpm : 270 Default with 50"inch sweep

### Available Finishes

- Matt Black
- Matt White
- Antique Bronze
- Silver

### Available Aluminium blade finish

- Aluminium Antique Bronze
- Aluminium Silver
- Aluminium Matt White
- Aluminium Matt Black





# DYNASTY

## Available Finishes

- Matt Black
- Matt White
- Antique Bronze
- Antique silver (Refer to model shalimar antique silver)

## Available Wooden Blade Finishes

- Wooden Natural Teak Hand Polish
- Wooden Walnut Hand Polish
- Wooden Rosewood Hand Polish
- Aluminium Antique Bronze
- Aluminium Antiqu Silver
- Aluminium Matt White
- Aluminium Matt Black

## Specification

- Sweep : 48"inch ( Can be custom made from 36" to 52")
- Volt : 220
- Watt : 85
- Rpm : 270 Default with 48"inch sweep (Note : Rpm changes according to sweep size)







**MONARCH**

**Specification**

- Sweep : 48"inch ( Can be custom made from 36" to 52")
- Volt : 220
- Watt : 85
- Rpm : 270 Default with 48"inch sweep  
(Note : Rpm changes according to sweep size)

**Available Finishes**

- Matt Black
- Matt White
- Antique Bronze
- Antique Silver( Refer to model shalimar antiqur silver)

**Available Wooden Blade Flnishes**

- Wooden Natural Teak Hand Polish
- Wooden Walnut Hand Polish
- Wooden Rosewood Hand Polish







## DIVA

### Specification

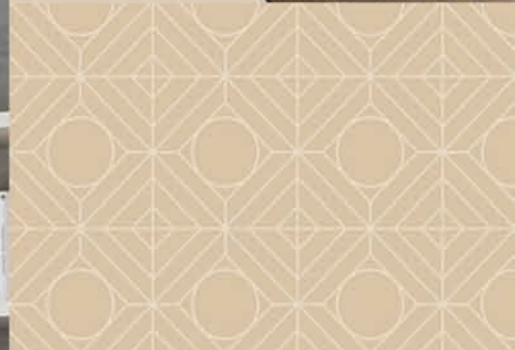
- Sweep : 48"inch ( Can be custom made from 36" to 52")
- Volt : 220
- Watt : 85
- Rpm : 270 Default with 48"inch sweep  
(Note : Rpm changes according to sweep size)

### Available Finishes

- Matt Black
- Matt White
- Antique Bronze
- Matt Pweter

### Available Wooden Blade Finishes

- Wooden Natural Teak Hand Polish
- Wooden Walnut Hand Polish
- Wooden Rosewood Hand Polish







**LEGEND**

**Specification**

- Sweep : 48"inch ( Can be custom made from 36" to 52")
- Volt : 220
- Watt : 85
- Rpm : 270 Default with 48"inch sweep  
(Note : Rpm changes according to sweep size)

**Available Finishes**

- Matt Black
- Matt White
- Antique Bronze
- Matt Pewter

**Available Wooden Blade Finishes**

- Wooden Natural Teak Hand Polish
- Wooden Walnut Hand Polish
- Wooden Rosewood Hand Polish







## ERA

### Available Finishes:

- Matt Black
- Matt White
- Antique Bronze (as shown in the picture)
- Matt Pewter

### Available Wooden Finishes:

- Wooden Natural Teak Hand Polish
- Wooden Walnut Hand Polish (as shown in the picture)
- Wooden Rosewood Hand Polish

### Specification

- Sweep : 48"inch ( Can be custom made from 36" to 52")
- Volt : 220
- Watt : 85
- Rpm : 270 Default with 48"inch sweep  
(Note : Rpm changes according to sweep size)





## CROWN VINTAGE

### Specification

- Sweep : 48"inch ( Can be custom made from 36" to 52")
- Volt : 220
- Watt : 85
- Rpm : 270 Default with 48"inch sweep  
(Note : Rpm changes according to sweep size)

### Available Finishes:

- Matt Black
- Matt White
- Antique Bronze

### Available Wooden & Aluminium Blade Finishes:

- Wooden Natural Teak Hand Polish
- Wooden Walnut Hand Polish
- Wooden Rosewood Hand Polish
- Aluminium Antique Bronze
- Aluminium Matt White
- Aluminium Matt Black







## MONARCH HAND PAINTED

### Specification

- Sweep : 48"inch ( Can be custom made from 36" to 52")
- Volt : 220
- Watt : 85
- Rpm : 270 Default with 48"inch sweep  
(Note : Rpm changes according to sweep size)

- This picture shown is for illustration purpose only.  
Actual product may vary due to handwork.

### Available Finishes

- Matt Black
- Matt White
- Antique Bronze
- Antique Silver( Refer to model shalimar antiqur silver)

### Available Wooden Blade Finishes

- Wooden Natural Teak Hand Polish
- Wooden Walnut Hand Polish
- Wooden Rosewood Hand Polish





## LEGEND LIGHT

### Specification

- Sweep : 48"inch ( Can be custom made from 36" to 52")
- Volt : 220
- Watt : 85 (LIGHT USED : FILAMENT BULB)
- Rpm : 270 Default with 48"inch sweep  
(Note : Rpm changes according to sweep size)

### Available Finishes

- Matt Black
- Matt White
- Matt Brown
- Matt Pewter
- Antique Bronze

### Available Wooden Blade Finishes

- Wooden Natural Teak Hand Polish
- Wooden Walnut Hand Polish
- Wooden Rosewood Hand Polish





## MONARCH CAMEL BONE

### Specification

- Sweep : 48"inch ( Can be custom made from 36" to 52")
- Volt : 220
- Watt : 85
- Rpm : 270 Default with 48"inch sweep (Note Rpm changes according to sweep size)

This picture shown is for illustration purpose only. Actual product may vary due to handwork.

### Available Finishes:

- Matt Black
- Matt White
- Matt Brown
- Antique Bronze
- Antique Silver

### Available Wooden Blade Finishes:

- Wooden Natural Teak Hand Polish
- Wooden Walnut Hand Polish
- Wooden Rosewood Hand Polish







## MONARCH MYSORE KALAM

### Specification

Sweep : 48"inch ( Can be custom made from 36" to 52")  
Volt : 220  
Watt : 85  
Rpm : 270 Default with 48"inch sweep  
(Note : Rpm changes according to sweep size)

- This picture shown is for illustration purpose only.  
Actual product may vary due to handwork.

### Available Finishes

- Matt Black  
- Matt White  
- Antique Bronze  
- Antique Silver  
( Refer to model shalimar antiquer silver)

### Available Wooden Blade Finishes

- Wooden Natural Teak Hand Polish  
- Wooden Walnut Hand Polish  
- Wooden Rosewood Hand Polish





## SHALIMAR CANE LEAF

### Specification

- Sweep : 36"inch ( Can be custom made to 40")
- Volt : 220
- Watt : 85
- Rpm : 270 Default with 48"inch sweep  
(Note : Rpm changes according to sweep size)

### Available Finishes:

- Antique Bronze (as shown in the picture)
- Antique Silver

### Available Wooden Blade Finishes:

- Wooden Natural Teak Hand Polish
- Wooden Walnut Hand Polish (as shown in the picture)
- Wooden Rosewood Hand Polish





## DIVE CANE BLADE

### Specification

- Sweep : 48"inch ( Can be custom made from 36" to 52")
- Volt : 220
- Watt : 85
- Rpm : 270 Default with 48"inch sweep  
(Note : Rpm changes according to sweep size)

### Available Finishes

- Matt Black
- Matt White
- Antique Bronze
- Matt Pweter

### Available Wooden Blade Finishes

- Wooden Natural Teak Hand Polish
- Wooden Walnut Hand Polish
- Wooden Rosewood Hand Polish



PEDESTAL  
WOODEN  
*fan*



PEDESTAL  
METAL *fan*

ANTIQUE  
WALL *fan*



ANTIQUE  
TABLE *fan*



**Available Motor Finish:**

- Matt Black with brass components combination
- Matt White with brass components combination
- Antique bronze with brass components combination

**Available Blade Finish:**

- Brass Metal Blades
- Aluminium Antique Bronze Painted
- Aluminium Matt White Painted
- Aluminium Matt Black Painted

**Specification:**

- Sweep : 16"inch | 12"inch
- Volt : 220
- Watt : 75









## HAND PAINTED SHALIMAR

### Specification

- Sweep : 48"inch (Can be custom made from 36" to 52")
- Volt : 220
- Watt : 85
- Rpm : 270 Default with 48"inch sweep  
(Note : Rpm changes according to sweep size)

- This picture shown is for illustration purpose only.  
Actual product may vary due to handwork.







## DIVA HERITAGE

### Available finishes:

- Matt Black (as shown in the picture)
- Matt White
- Antique Bronze
- Silver

### Specification

- Sweep : 50"
- Volt : 220
- Watt : 85
- Rpm : 260 Default with 50" inch sweep

### Available wooden blade finish:

- Wooden Natural hand polish (As shown in picture)







**SHALIMAR CANE**

**Available Finishes**  
- Antique Bronze

**Available Wooden Blade Finishes**  
- Wooden Walnut Cane Weaved (HANDMADE)

**Specification**  
- Sweep : 48"inch  
- Volt : 220  
- Watt : 85  
- Rpm wooden blades : 275  
Default with 48"inch sweep







## SHALIMAR LEAF

### Available Finishes:

- Antique Bronze (as shown in the picture)
- Antique Silver

### Available Wooden Blade Finishes:

- Wooden Natural Teak Hand Polish
- Wooden Walnut Hand Polish (as shown in the picture)
- Wooden Rosewood Hand Polish

### Specification

- Sweep : 36"inch ( Can be custom made to 40")
- Volt : 220
- Watt : 85
- Rpm : 270 Default with 48"inch sweep (Note : Rpm changes according to sweep size)





# MARVEL

## Specification:

- Sweep : 48"inch ( Can be custom made from 48" to 60")
- Volt : 220-230
- Watt : 75-85
- Rpm : 280

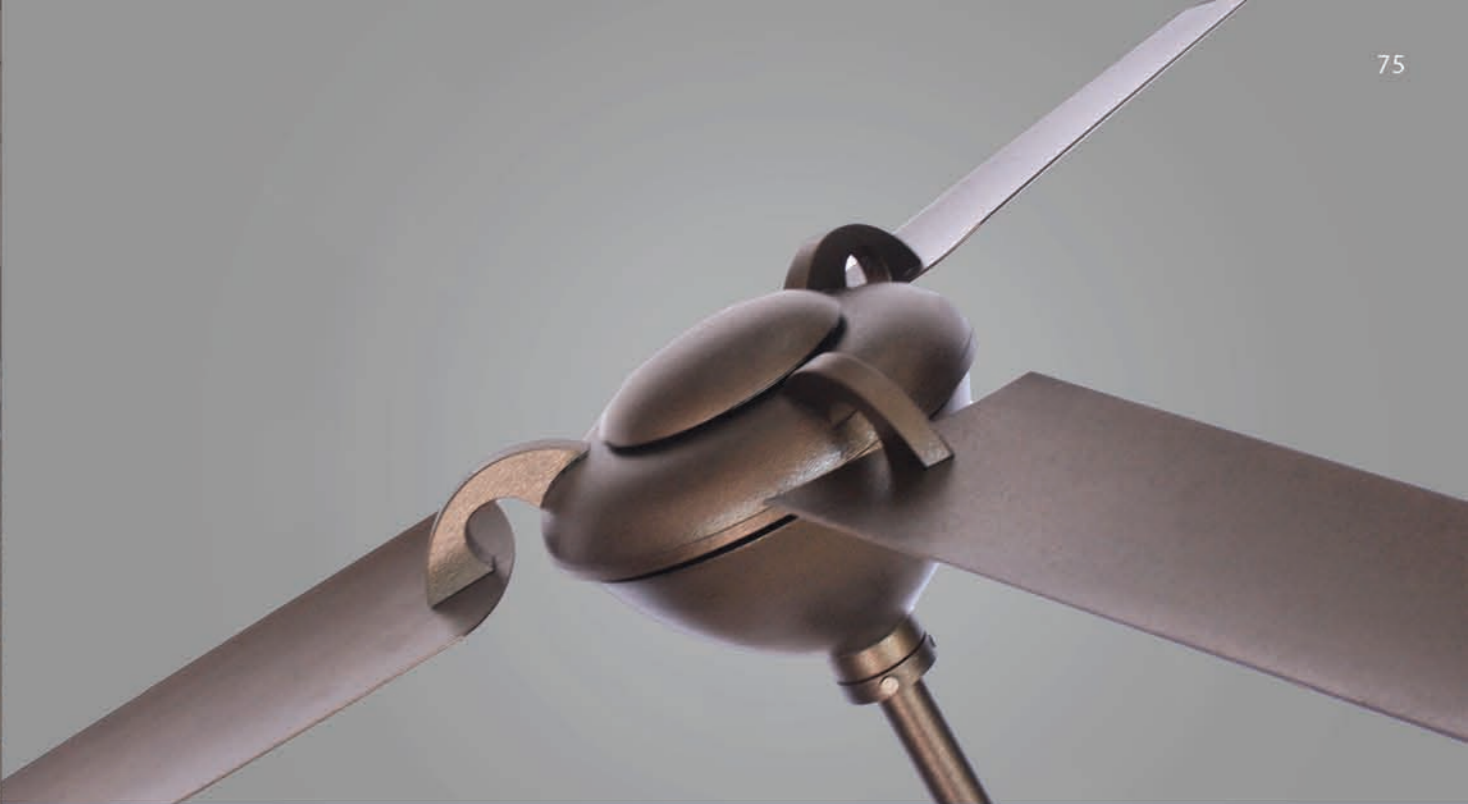
## Available Finishes:

- Matt Black
- Matt White
- Antique Bronze
- Matt Pweter

- This Fan can be customised with Brass and Chrome Components







## VIRAJ

### Specification

- Sweep : 48"inch ( Can be custom made from 36" to 52")
- Volt : 220
- Watt : 85
- Rpm : 270 Default with 48"inch sweep  
(Note : Rpm changes according to sweep size)

### Available Finishes:

- Matt Black
- Matt White
- Antique Bronze
- Matt Pweter

### Available Wooden & Alluminium Blade Finishes:

- Wooden Natural Teak Hand Polish
- Wooden Walnut Hand Polish
- Wooden Rosewood Hand Polish
- Aluminium Antique Bronze
- Aluminium Silver
- Aluminium Matt White
- Aluminium Matt Black
- Aluminium Matt Pweter





**CRESCENT**

<p><b>Available Finishes:</b></p> <ul style="list-style-type: none"> <li>- Matt Black</li> <li>- Matt White</li> <li>- Antique Bronze (as shown in the picture)</li> <li>- Matt Pweter</li> </ul> <p><b>Available Finishes:</b></p> <ul style="list-style-type: none"> <li>- Matt Black</li> <li>- Matt White</li> <li>- Antique Bronze (as shown in the picture)</li> <li>- Matt Pweter</li> </ul>	<p><b>Specification</b></p> <ul style="list-style-type: none"> <li>- Sweep : 48"inch ( Can be custom made from 36" to 52")</li> <li>- Volt : 220</li> <li>- Watt : 85</li> <li>- Rpm : 270 Default with 48"inch sweep (Note : Rpm changes according to sweep size)</li> </ul>
---	---





# REVIVAL



## Specification

- Sweep : 48"inch ( Can be custom made from 36" to 52")
- Volt : 220
- Watt : 85
- Rpm : 270 Default with 48"inch sweep (Note Rpm changes according to sweep size)

## Available Finishes:

- Matt Black
- Matt White
- Antique Bronze
- Matt Pewter

## Available Wooden & Aluminium Blade Finishes:

- Wooden Natural Teak Hand Polish
- Wooden Walnut Hand Polish
- Wooden Rosewood Hand Polish
- Aluminium Antique Bronze
- Aluminium Silver
- Aluminium Matt White
- Aluminium Matt Black





# VICTOR



## Specification

- Sweep : 48"inch ( Can be custom made from 36" to 52")
- Volt : 220
- Watt : 85
- Rpm : 270 Default with 48"inch sweep (Note Rpm changes according to sweep size)

## Available Finishes:

- Matt Black
- Matt White
- Antique Bronze
- Alluminium Brushed (as shown in the picture)
- Matt Pewter

## Available Wooden Blade Finishes:

- Wooden Natural Teak Hand Polish
- Wooden Walnut Hand Polish (as in the picture)
- Wooden Rosewood Hand Polish







## REVIVAL DLX

### Specification

- Sweep : 48"inch ( Can be custom made from 36" to 52")
- Volt : 220
- Watt : 85
- Rpm : 270 Default with 48"inch sweep  
(Note : Rpm changes according to sweep size)

### Available Finishes:

- Matt Black
- Matt White
- Antique Bronze
- Matt Pweter

### Available Wooden & Aluminium Blade Finishes:

- Wooden Natural Teak Hand Polish
- Wooden Walnut Hand Polish
- Wooden Rosewood Hand Polish
- Aluminium Antique Bronze
- Aluminium Silver
- Aluminium Matt White
- Aluminium Matt Black
- Aluminium Matt Pweter





## CASCADE

### Specification

- Sweep : 48"inch ( Can be custom made from 36" to 52")
- Volt : 220
- Watt : 85
- Rpm : 270 Default with 48"inch sweep (Note : Rpm changes according to sweep size)

### Available Finishes:

- Matt Black
- Matt White
- Antique Bronze
- Matt Pweter
- Silver

### Available Wooden & Aluminium Blade Finishes:

- Wooden Natural Teak Hand Polish
- Wooden Wallnut Hand Polish
- Wooden Rosewood Hand Polish
- Aluminium Antique Bronze
- Aluminium Silver
- Aluminium Matt White
- Aluminium Matt Black
- Aluminium Matt Pweter







## BOMBAY FAN

### Available Finishes

- Matt Black
- Matt White
- Antique Bronze
- Matt Pweter

### Specification

- Sweep : 16"inch/400mm
- Volt : 220/230
- Watt : 70
- Rpm : 1260

### Available Wooden & Aluminium Blade Finishes:

- Wooden Natural Teak Hand Polish
- Wooden Walnut Hand Polish
- Wooden Rosewood Hand Polish
- Aluminium Antique Bronze
- Aluminium Silver
- Aluminium Matt White
- Aluminium Matt Black
- Aluminium Matt Pweter





## ASTER

### Specification

- Sweep : 48"inch ( Can be custom made from 36" to 52")
- Volt : 220
- Watt : 85
- Rpm : 270 Default with 48"inch sweep (Note : Rpm changes according to sweep size)

### Available Finishes:

- Matt Black
- Matt White
- Antique Bronze
- Matt Pweter

### Wooden & Aluminium Blade Finishes:

- Wooden Natural Teak Hand Polish
- Wooden Walnut Hand Polish
- Wooden Rosewood Hand Polish



## OPTIONAL *Accessories*



- I.R. REMOTE  
- 3 SPEED CONTROL  
- RANGE OF 10 METERS



- 5 SPEED ELECTRONIC  
REGULATOR DESIGNED  
FOR OUR CEILING FANS



- CUSTOM LENGTH DOWNRODS  
- DOWN RODS OF ANY LENGTH  
UPTO 4 FEET IN SINGLE LENGTH  
- DOWN RODS WITH JOINTS IN  
ANY LENGTH

## SOME OF OUR *Clients*

- |                                 |                                      |                                       |                       |
|---------------------------------|--------------------------------------|---------------------------------------|-----------------------|
| ▶ Taj Bentota Srilanka          | ▶ Alia Bhatt                         | ▶ Amar Builders                       | ▶ Ar. Prakash Chandak |
| ▶ Taj Bekal                     | ▶ Raymond Group                      | ▶ Abha Narain                         | ▶ Ar. Zubin           |
| ▶ Taj Lake Palace Udaipur       | ▶ Uppal Groups                       | ▶ Dy Patil                            | ▶ Ar. Richa Behel     |
| ▶ Taj Jim Corbet                | ▶ Manoj Bajpai                       | ▶ Biswas Consultants                  | ▶ Ar. Saumya Kalpa    |
| ▶ Taj Vivanta Bangalore         | ▶ Producer Vipul Amrut Lal Shah      |                                       | ▶ Ar. Hiren Patel     |
| ▶ Holiday Inn Goa               | ▶ Twinkle Khanna – The White Windows | ▶ Morphogenesis                       | ▶ Ar. Rajesh Patel    |
| ▶ Novotel Goa                   | ▶ Marvel Tea                         | ▶ Studio Sba                          | ▶ Ar. Bobby Mukherjee |
| ▶ Allila Diwa Goa               | ▶ Emraan Hashmi                      | ▶ Spaces Architects                   | ▶ Ar. Mahesh Punjabi  |
| ▶ Alila Diwa Bishangarh         | ▶ Rani Mukherjee                     | ▶ Blue Print Architects               | ▶ Ar. Divya Modi      |
| ▶ Samode Palace And Haveli      |                                      | ▶ Studio Incept                       | ▶ Ar. CN Architects   |
| ▶ Premier Inn Goa               | ▶ Tarun Thaliani Varya Design        | ▶ Synthesis Architecture And Interior | ▶ Ar. Vishnu Bheda    |
| ▶ Mayfair Hotels And Resorts    | ▶ Isparva Group                      | ▶ Designs                             | ▶ Ar. Saket Ojha      |
| ▶ Negambo Beach Resort Srilanka | ▶ Ishwar Parmar Group                | ▶ Adg Sqaure                          | ▶ Ar. Iram Sultaniaa  |
| ▶ The Sol Goa                   | ▶ Rohan Builder                      |                                       | ▶ Ar. Vishnu Bheda    |
| ▶ Lemontree Pune/Goa            | ▶ Akshar Developers                  | ▶ Ar. Ajit ans Shilpi                 | ▶ Ar. Ashish Kulkarni |
| ▶ Jim Jungle Retreat            | ▶ Bric Design                        | ▶ Ar. Anil Ranka                      | ▶ Ar. Divya Modi      |
| ▶ The Lalit Group Of Hotels     | ▶ The BNK Group                      | ▶ Ar. Amala Seth                      | ▶ Ar. Sandeep         |
| ▶ Ramsukh Resort                | ▶ Pansheel Reality                   | ▶ Ar. Sunil Patil                     | ▶ Ar. Adish Patni     |



[www.thefanstudio.com](http://www.thefanstudio.com)

**HEAD OFFICE**

The Fan Studio, The Plaza Mall, First Floor, Meharuli Gurgaon Road, Gurgaon, Haryana 122 001  
info@thefanstudio.com, 0124 4375334, +91 99713 77334

**WESTERN AND SOUTHERN REGION HEAD QUARTERS**

The Fan Studio, Nityanand Complex, No. 10 & 11A, Ground Floor, 247 B, Bund Garden Road, Pune. Maharashtra 411001  
thefanstudiopune@gmail.com, +91 98812 90494, +91 98220 90494



[www.thefanstudio.com](http://www.thefanstudio.com)

**HEAD OFFICE**

The Fan Studio, The Plaza Mall, First Floor, Meharuli Gurgaon Road, Gurgaon, Haryana 122 001  
info@thefanstudio.com, 0124 4375334, +91 99713 77334

**WESTERN AND SOUTHERN REGION HEAD QUARTERS**

The Fan Studio, Nityanand Complex, No. 10 & 11A, Ground Floor, 247 B, Bund Garden Road, Pune. Maharashtra 411001  
thefanstudiopune@gmail.com, +91 98812 90494, +91 98220 90494